



Halton eHIT MagiCAD Cloud Plugin for Revit

13/04/2026

Content

1	GENERAL	3
1.1	About This Document	3
1.2	Installing the Plugin	3
1.2.1	Required Software	3
1.2.2	Installation	3
1.3	Starting the Plugin	4
2	HOW TO USE THE PLUGIN	5
2.1	Insert Airflow Damper	5
2.1.1	Installation with MagiCAD for Revit	6
2.1.2	Installation with Revit	7
2.2	Insert Measurement Unit	8
2.3	Insert Outdoor Louvre	8
2.4	Insert Fire Dampers and Valves	9
2.5	Insert Smoke Control Damper	9
2.6	Insert Chilled Beam	9
2.7	Insert Radiant Panel	10
2.8	Insert Diffusers and Plenums	10
2.9	Insert Transfer Grille	11
2.10	Insert Valve	11
2.11	Insert Displacement Ventilation	11

1 General

1.1 About This Document

This document contains instructions how install and use *Halton eHIT MagiCAD for Revit Plugin*.

Halton eHIT plugin is Autodesk Revit add-in application and it works with MagiCAD for Revit and with plain Revit.

1.2 Installing the Plugin

1.2.1 Required Software

Halton eHIT MagiCAD plugin for Revit works with the following MagiCAD and Revit versions.

Revit

- Revit 2024-2027.

MagiCAD for Revit (optional)

- MagiCAD 2026 with Revit versions 2024-2026.
- MagiCAD 2027 with Revit versions 2025-2027.

1.2.2 Installation

Administrator privileges are recommended for installation.

1. Download the installation package from MagiCAD portal.

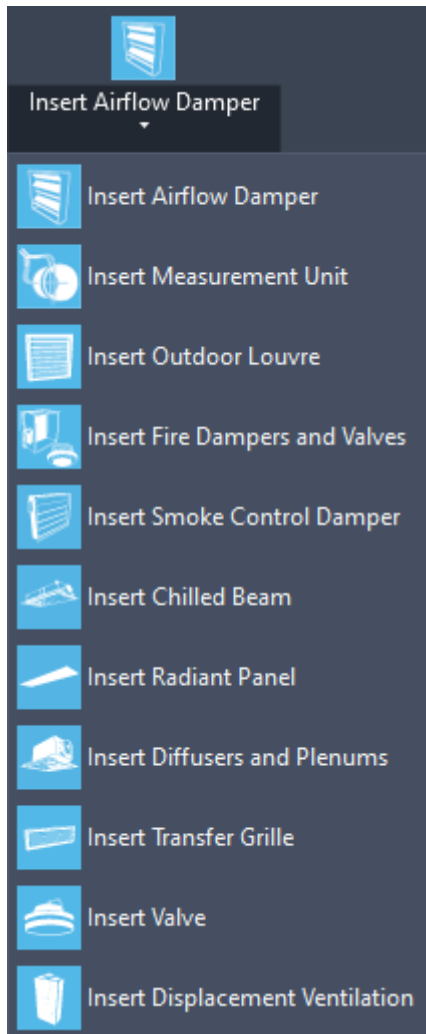
<https://portal.magicad.com/download/ProductSearch?searchStr=Halton&categoryId=3>

2. Run the installer on your workstation.

1.3 Starting the Plugin

The plugin is automatically loaded, and it is ready to be used once Revit is started next time after the plugin installation.

Halton eHIT plugin ribbon panel can be found from MagiCAD Connect tab in Revit. When the drop-down button is clicked, the list of available operations will be shown.



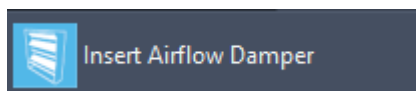
2 How to Use the Plugin

2.1 Insert Airflow Damper

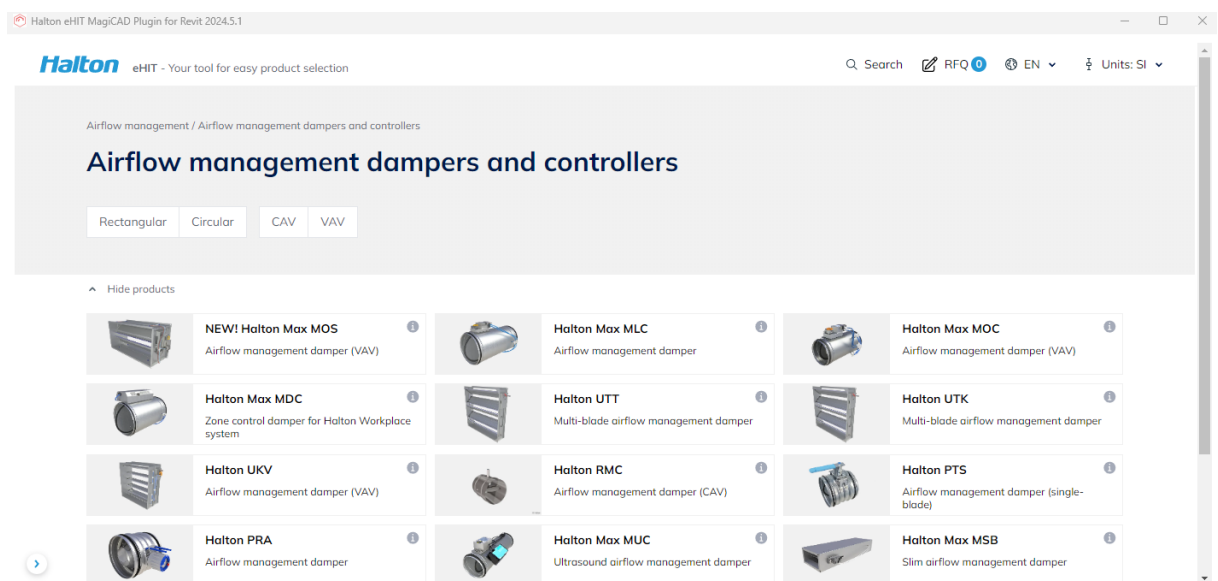
This command opens Halton eHIT web application selecting airflow damper. Airflow dampers will be added to *Air flow dampers* category in MagiCAD for Revit. In Revit, airflow dampers are added to *Duct Accessories* family type.

If Revit without MagiCAD is used, the plugin creates RFA and the product instance that can be inserted at the desired location.

1. Start *Insert airflow damper* command from ribbon button.

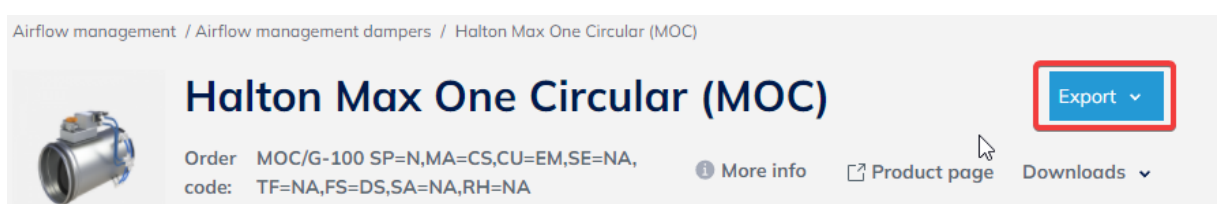


2. Select the type of airflow damper.



3. After the type of airflow damper has been selected, the user can configure product properties before inserting the product to MagiCAD for Revit or Revit.

Export dropdown menu contains button for adding the selected product to MagiCAD and Revit.

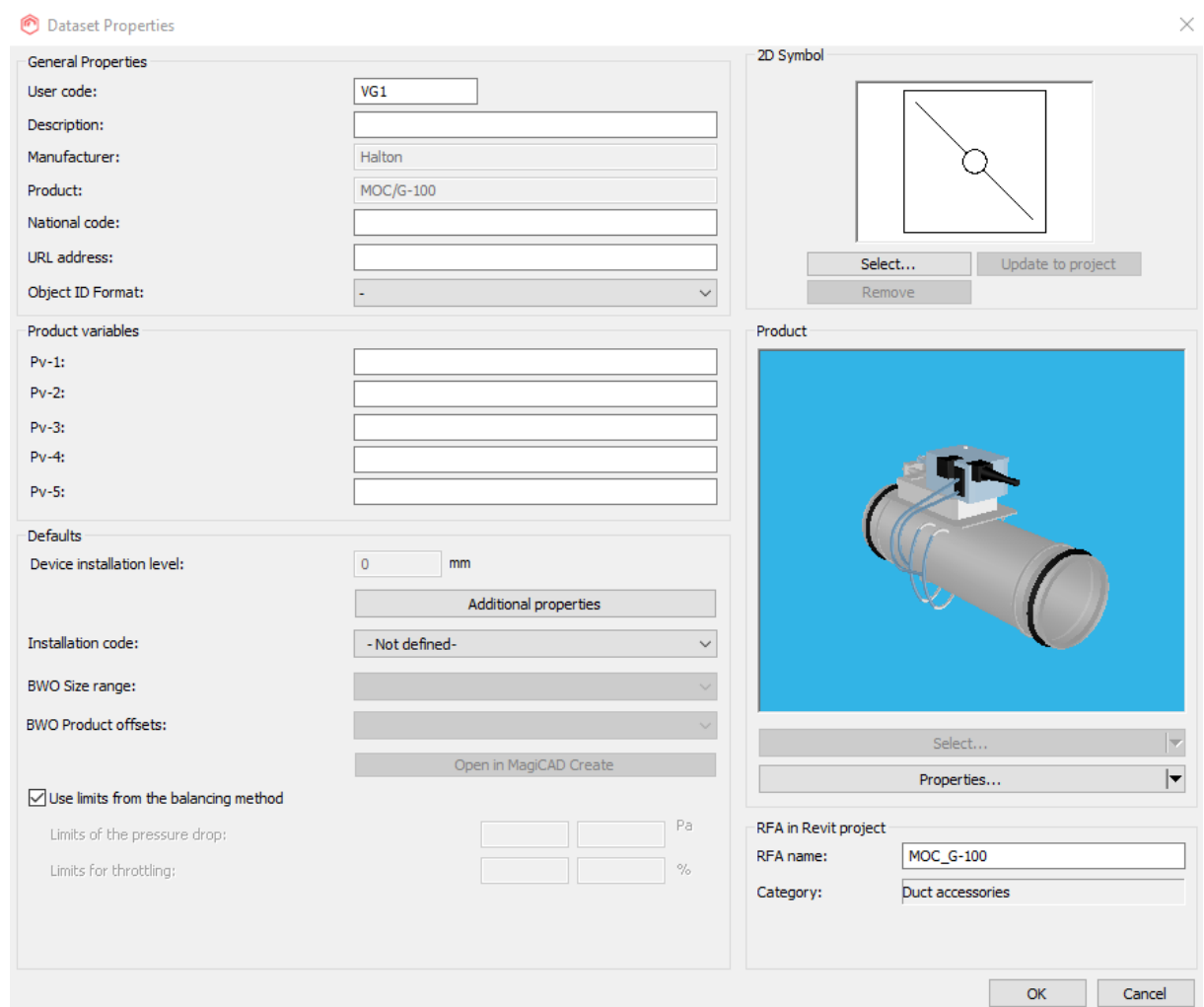


The next step is to add the product to MagiCAD for Revit or Revit with the plugin. Please see next chapters.

2.1.1 Installation with MagiCAD for Revit

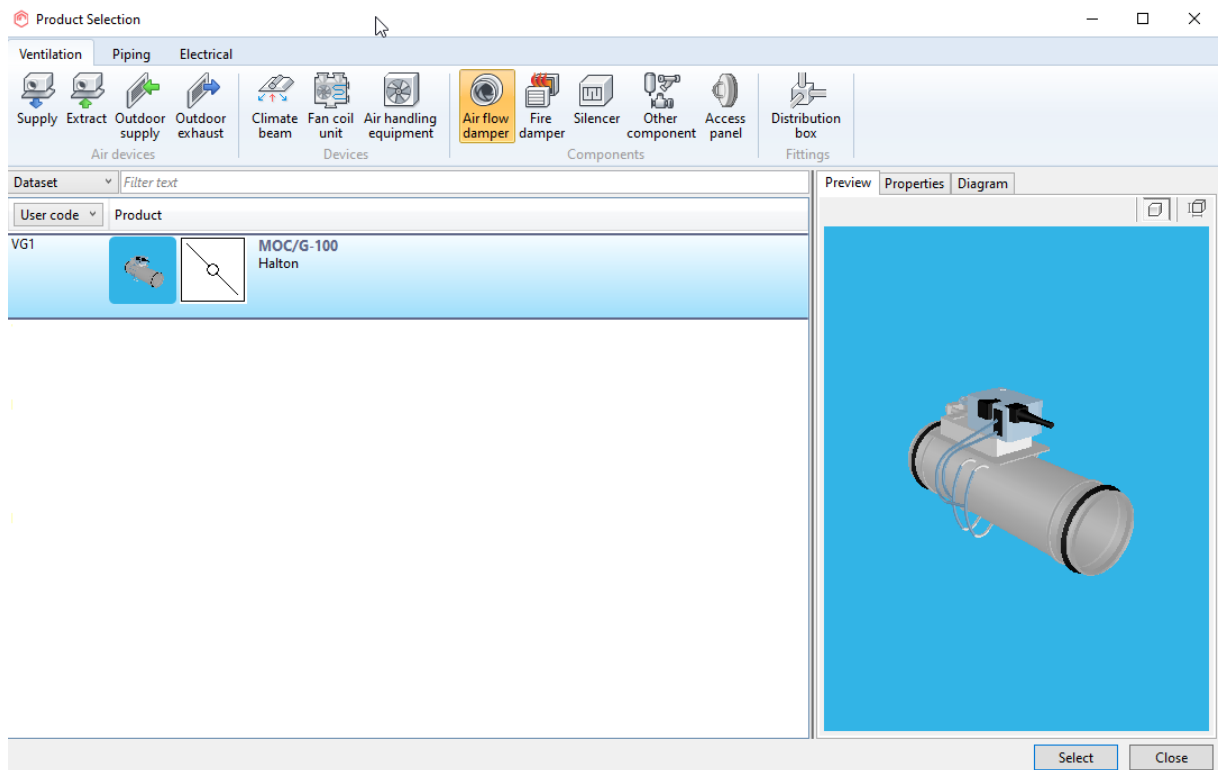
This chapter describes how the plugin will add the product to MagiCAD for Revit after the product is selected and configured in Halton eHIT web application.

1. The plugin opens the window where the user can give a user code and select 2D symbol for the product.



2. Once the user code and 2D symbol is selected, the selected product is active in the window.

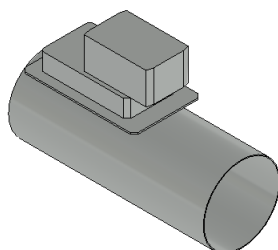
The product properties can be checked in the window, for example, 3D model and airflow / pressure curve data.



- After clicking *Select* button from the dialog, the user can insert the selected product into a duct by clicking on the desired spot or empty space in the Revit view.



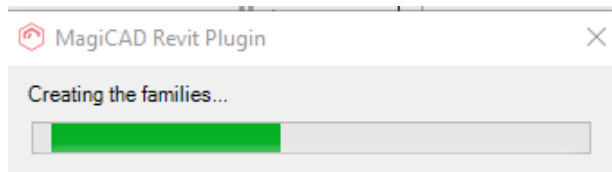
- The selected product in 3D view in Revit.



2.1.2 Installation with Revit

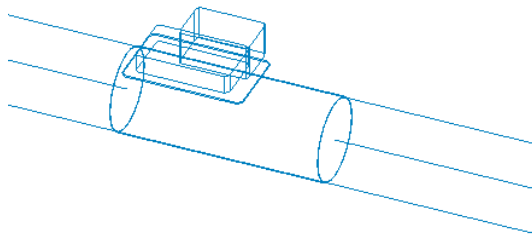
This chapter describes how the plugin will add the product to Revit after the product is selected and configured in Halton eHIT web application.

1. The plugin starts to create RFA from the selected product.



2. Once the product has been created, the plugin creates a product instance. The user can insert the instance to desired location in the Revit view.

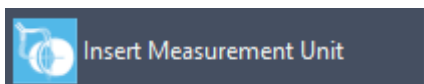
In this example, the product is connected to duct.



2.2 Insert Measurement Unit

This command opens Halton eHIT web application for selecting measurement units. Measurement units will be added to *Other components* category in MagiCAD for Revit. In Revit, measurement units are added to *Duct Accessories* family type.

Adding a measurement unit works the same way than adding an airflow damper to MagiCAD for Revit and Revit. The feature is started by clicking *Insert Measurement Unit* command from ribbon button.

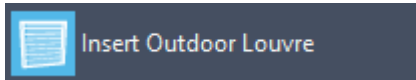


This opens Halton eHIT web application for selection and configuring the measurement unit. Once the product is configured, it is added to MagiCAD for Revit or Revit, and the product instance can be added to the Revit view.

2.3 Insert Outdoor Louvre

This command opens Halton eHIT web application for selecting Outdoor louvres. Outdoor louvre will be added to *Outdoor supply* category in MagiCAD for Revit. In Revit, Outdoor louvres are added to *Air Terminals* family type.

Adding an Outdoor louvre works the same way than adding an airflow damper to MagiCAD for Revit and Revit. The feature is started by clicking *Insert Outdoor louvre* command from ribbon button.

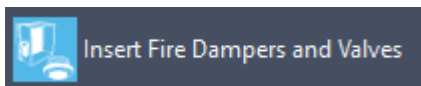


This opens Halton eHIT web application for selection and configuring the Outdoor louvre. Once the product is configured, it is added to MagiCAD for Revit or Revit, and the product instance can be added to the Revit view.

2.4 Insert Fire Dampers and Valves

This command opens Halton eHIT web application for selecting fire dampers and valves. Fire dampers and valves will be added to *Fire dampers* or *Extract* category in MagiCAD for Revit. In Revit, fire dampers and valves are added to *Duct Accessories* or *Air terminals* family type.

Adding a fire damper or valve works the same way than adding an airflow damper to MagiCAD for Revit and Revit. The feature is started by clicking *Insert Fire Dampers and Valves* command from ribbon button.

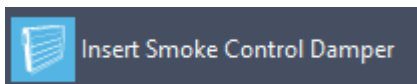


This opens Halton eHIT web application for selection and configuring the fire damper or valve. Once the product is configured, it is added to MagiCAD for Revit or Revit, and the product instance can be added to the Revit view.

2.5 Insert Smoke Control Damper

This command opens Halton eHIT web application for selecting smoke control dampers. smoke control dampers will be added to *Fire dampers* category in MagiCAD for Revit. In Revit, smoke control dampers are added to *Duct Accessories* family type.

Adding a smoke control damper or valve works the same way than adding an airflow damper to MagiCAD for Revit and Revit. The feature is started by clicking *Insert Smoke Control Damper* command from ribbon button.

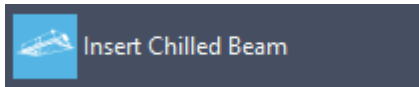


This opens Halton eHIT web application for selection and configuring the smoke control damper. Once the product is configured, it is added to MagiCAD for Revit or Revit, and the product instance can be added to the Revit view.

2.6 Insert Chilled Beam

This command opens Halton eHIT web application for selecting chilled beams. Chilled beams will be added to *Climate beam* category in MagiCAD for Revit. In Revit, chilled beams are added to *Mechanical equipment* family type.

Adding a chilled beam works the same way than adding an airflow damper to MagiCAD for Revit and Revit. The feature is started by clicking *Insert Chilled Beam* command from ribbon button.

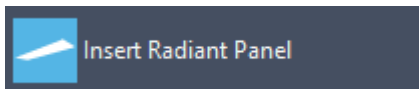


This opens Halton eHIT web application for selection and configuring the chilled beam. Once the product is configured, it is added to MagiCAD for Revit or Revit, and the product instance can be added to the Revit view.

2.7 Insert Radiant Panel

This command opens Halton eHIT web application for selecting radiant panels. Radiant panels will be added to *Climate beam* category in MagiCAD for Revit. In Revit, radiant panels are added to *Mechanical equipment* family type.

Adding a radiant panel works the same way than adding a chilled beam to MagiCAD for Revit and Revit. The feature is started by clicking *Insert Radiant Panel* command from ribbon button.

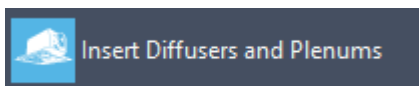


This opens Halton eHIT web application for selection and configuring the radiant panel. Once the product is configured, it is added to MagiCAD for Revit or Revit, and the product instance can be added to the Revit view.

2.8 Insert Diffusers and Plenums

This command opens Halton eHIT web application for selecting diffusers and plenums. Diffusers and plenums will be added to *Supply air device* or *Extract air device* category in MagiCAD for Revit. In Revit, diffusers and plenums are added *Air terminals* family type.

Adding a diffuser or plenum works the same way than adding an airflow damper to MagiCAD for Revit and Revit. The feature is started by clicking *Insert Diffusers and Plenums* command from ribbon button.

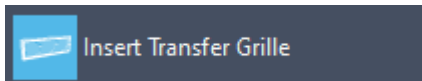


This opens Halton eHIT web application for selection and configuring the diffuser or plenum. Once the product is configured, it is added to MagiCAD for Revit or Revit, and the product instance can be added to the Revit view.

2.9 Insert Transfer Grille

This command opens Halton eHIT web application for selecting transfer grilles. Transfer grilles will be added to *Supply air device* category in MagiCAD for Revit. In Revit, transfer grilles are added *Air terminals* family type.

Adding a transfer grille works the same way than adding an airflow damper to MagiCAD for Revit and Revit. The feature is started by clicking *Insert Transfer Grille* command from ribbon button.

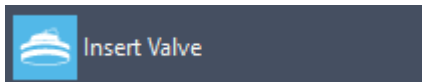


This opens Halton eHIT web application for selection and configuring the transfer grille. Once the product is configured, it is added to MagiCAD for Revit or Revit, and the product instance can be added to the Revit view.

2.10 Insert Valve

This command opens Halton eHIT web application for selecting valves. Valves will be added to *Extract air device* or *Supply air device* category in MagiCAD for Revit. In Revit, valves are added *Air terminals* family type.

Adding a valve works the same way than adding an airflow damper to MagiCAD for Revit and Revit. The feature is started by clicking *Insert Valve* command from ribbon button.

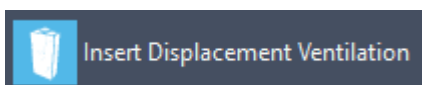


This opens Halton eHIT web application for selection and configuring the valve. Once the product is configured, it is added to MagiCAD for Revit or Revit, and the product instance can be added to the Revit view.

2.11 Insert Displacement Ventilation

This command opens Halton eHIT web application for selecting displacement ventilation units. Displacement ventilation units will be added to *Supply air device* category in MagiCAD for Revit. In Revit, displacement ventilation units are added *Air terminals* family type.

Adding a displacement ventilation unit works the same way than adding an airflow damper to MagiCAD for Revit and Revit. The feature is started by clicking *Insert Displacement Ventilation* command from ribbon button.



This opens Halton eHIT web application for selection and configuring the displacement ventilation unit. Once the product is configured, it is added to MagiCAD for Revit or Revit, and the product instance can be added to the Revit view.